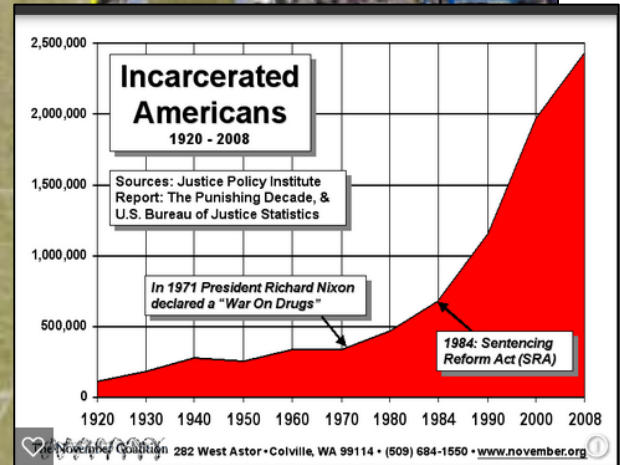
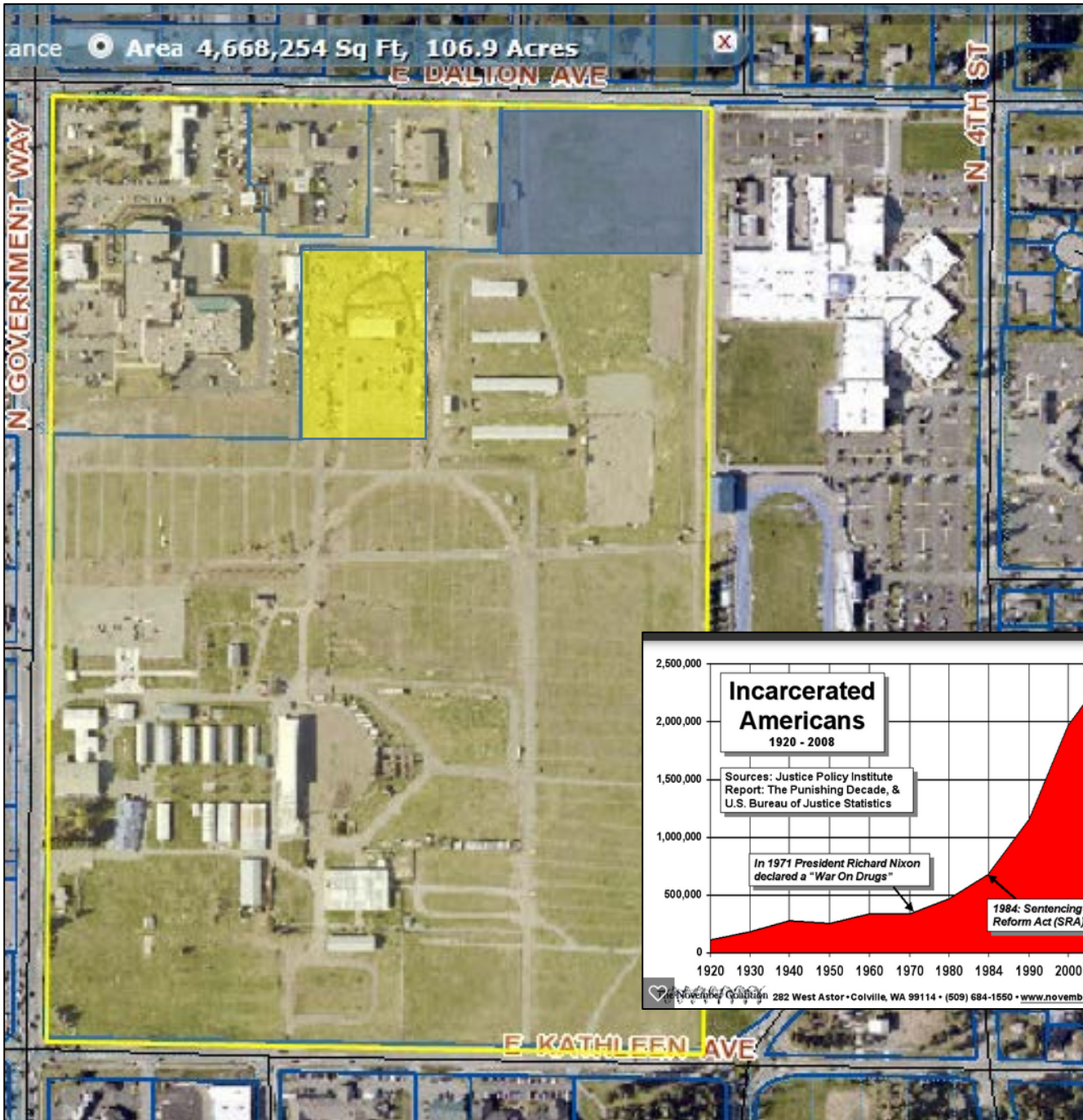



Kootenai County Jail – Bob Bingham 4/2016

Current campus (12.2+2.7+4.7) = 19.7 acres **Current Jail** = 325 beds,
Options (short and longer term) **1) Expand the jail facility,** **2) Build a new one,** **3) Privatize**
 (add 3-4 acres Jail/records **yellow**) (add 5-6 acres justice **blue**)



Ada Jail = 1217 total of which 130 (10%) CCU cells (*expanded 2013 adding 88 beds for \$4.6mil*)
Canyon jail = 400 total (*designing now, 3 failed bonds, 2015 killed plan for 300beds 60ksf, \$13.5 mil*)
Kootenai Jail = 325 total, (*3 failed bond attempts, 1 failed privatized facility attempt*)
 Ada = 435,000 / 1217 = 1 bed p/357 citizens OR 280 beds p/100k population
 Canyon = 207,000 / 400 = 1 bed p/517 citizens OR 193 beds p/100k population
 Kootenai = 150,000 / 325 = 1 bed p/462 citizens OR 216 beds p/100k population
 National Average Incarceration Rate (2003) 715 p/100k population (*Canada was 116 p/100k*)

Good overall design level might be 250 beds p/100k population, 30 (12%) of which being single cells. A current planning design for 200k county population would equate to a overall jail inmate population design for 500, (35% increase) of which 60 would be single cells **and a design that acomodates the next jail expansion** Reveiwin the inmate list, 315 in jail 4/12/16,



**KOOTENAI COUNTY
SHERIFF'S OFFICE**

Kootenai County encompasses 1,310 miles of area to patrol, and over 140,000 county residents to serve within its boundaries. The Sheriff's Office is made up of two bureaus: the Operations Bureau, which includes the Patrol, Detective, Communication, and Recreational Divisions, and the Driver's License, Records, and Civil Sections and the Jail Bureau, which includes everything related to Jail functions.

GENERAL STATS	2012	2013	2014
Kootenai County Population	142,089	144,225	145,934
KCSO Police Jurisdiction Population	59,517	60,149	61,043
Jail Average Daily Booking	340	332	342
Total Adult Bookings (includes all arresting agencies)	6,062	6,196	7,747
9-1-1 Emergency Calls	44,807	43,727	50,222
All Other 9-1-1 Calls	125,823	119,952	189,680
Driver's Licenses Issued (incl. Commercial A,B & C classes)	105,169	106,913	109,133

Function	2005	2006	2007	2008	2009	2010	2011	2012	2013	2014
General Government										
Assessor	63.0	65.0	65.5	66.5	66.5	66.5	66.0	66.0	61.0	61.0
Clerk	70.0	72.2	75.2	76.3	75.5	75.5	75.5	77.5	77.5	78.5
Commissioners	98.2	98.2	106.0	106.0	106.0	107.3	105.9	100.4	99.4	99.5
Prosecuting Attorney	37.1	37.1	35.6	36.6	36.5	35.5	35.5	36.5	38.5	43.5
Sheriff	4.0	4.0	4.0	4.0	4.0	4.0	4.0	4.0	4.0	3.8
Treasurer	7.5	7.5	7.0	7.0	7.0	7.0	7.0	7.0	7.0	7.0
Public Safety										
Clerk	13.0	21.0	30.4	30.4	31.0	34.0	34.0	34.0	35.0	34.0
Commissioners	67.9	68.6	67.8	70.0	76.9	77.1	78.1	69.1	64.6	64.9
Coroner	1.5	1.5	2.0	2.0	2.0	2.0	2.3	2.3	2.0	2.0
Sheriff ¹	132.4	142.4	148.4	148.4	155.3	154.3	156.4	163.4	162.7	162.3
Jail (Sheriff)	113.9	115.9	123.9	123.1	126.4	124.4	120.4	122.4	122.4	126.4
Culture and Recreation										
Commissioners	6.0	7.0	7.0	7.5	7.5	7.5	7.5	7.5	7.5	6.3
Public Works										
Commissioners	7.1	7.1	7.6	7.6	7.6	7.6	7.6	7.6	7.6	7.6
Health and Welfare										
Clerk	7.0	7.0	7.0	7.0	7.0	7.0	7.0	8.0	7.0	7.0
Sanitation										
Commissioners	2.0	2.0	2.6	3.6	3.6	3.6	2.6	1.6	1.9	1.9
Solid Waste										
Commissioners	44.0	45.0	48.0	69.0	70.3	64.3	61.0	59.0	59.0	58.0
Total	674.6	701.5	738.0	765.0	783.1	777.6	770.8	766.3	757.0	763.6

Operating Indicators by Function/Program Last Ten Fiscal Years										
Function/Program	Fiscal Year									
	2005	2006	2007	2008	2009	2010	2011	2012	2013	2014
Police										
Physical arrests	7,382	8,032	8,627	9,207	8,673	9,156	8,291	7,824	7,830	6,983
District Court Caseload										
Felonies	1,003	981	930	1,925	1,836	2,028	1,957	920	1,101	1,114
Misdemeanors	7,540	8,770	12,672	12,308	11,801	11,195	10,217	7,077	7,226	6,893
Infractions	16,948	17,674	22,075	21,247	20,366	18,379	17,400	14,613	16,473	16,489

IDAHO

Offenses Known to Law Enforcement

by Metropolitan and Nonmetropolitan Counties, 2014

[The data shown in this table do not reflect county totals but are the number of offenses reported by the sheriff's office or county police department.]

Data Declaration Download Excel Table 10 State Listing

Metropolitan/Nonmetropolitan	County	Violent crime	Murder and nonnegligent manslaughter	Rape (revised definition) ¹	Rape (legacy definition) ²	Robbery	Aggravated assault	Property crime	Burglary	Larceny-theft	Motor vehicle theft	Arson
Metropolitan Counties	Ada	184	0	65		2	117	843	191	617	35	14
	Bannock	7	0	0		0	7	58	15	39	4	0
	Boise	7	0	0		0	7	95	20	71	4	0
	Bonneville	74	0	11		1	62	748	157	546	45	6
	Butte	8	0	1		0	7	0	0	0	0	0
	Canyon	70	1	11		2	56	576	207	322	47	9
	Franklin	1	0	0		0	1	74	22	50	2	0
	Gem	5	0	0		0	5	33	6	23	4	0
	Jefferson	6	0	0		1	5	125	28	87	10	0
	Kootenai	103	0	11		3	89	1,038	273	710	55	10
	Nez Perce	7	1	1		0	5	95	23	60	12	0

IDAHO

Full-time Law Enforcement Employees

by Metropolitan and Nonmetropolitan Counties, 2014

Data Declaration Download Excel Table 80 State Listing

Metropolitan/Nonmetropolitan	County	Total law enforcement employees	Total officers	Total civilians
Metropolitan Counties	Ada	425	136	289
	Bannock	66	42	24
	Boise	20	11	9
	Bonneville	102	65	37
	Butte	12	4	8
	Canyon	162	79	83
	Franklin	13	8	5
	Gem	24	13	11
	Jefferson	24	18	6
	Kootenai	167	95	72
	Nez Perce	41	22	19

435,000 / 425 = 1023 citizens p/LE emp
 435,000 / 136 = 3198 citizens p/officer
 1,055 sq miles

207,000 / 162 = 1277 citizens p/LE emp
 207,000 / 79 = 2620 citizens p/officer
 590 sq miles

150,000 / 167 = 898 citizens p/LE emp
 150,000 / 95 = 1578 citizens p/officer
 1,245 sq miles